

KYUNGWOON  
UNIVERSITY

# Table of Contents

4	About Kyungwoon University (IKW)
6	The First, Kyungwoon University
8	Global Leaders in Industry and University Cooperation
10	Global Kyungwoon
12	University-Industry Collaboration
14	National Grants
16	Extensive Career Opportunities
18	Scholarship Advantages
20	Kyungwoon Byuck Kang Art Center - A Better Quality of Life for All
22	International Development Efforts
24	College of IT & Energy
28	College of Aviation
32	College of Health Sciences
38	College of Social Sciences
42	College of Security and Sports Sciences
46	College of Nursing
48	Graduate Programs
51	University-Industry Collaboration Foundation
52	Campus Institutions
58	Student Life
62	Campus Map



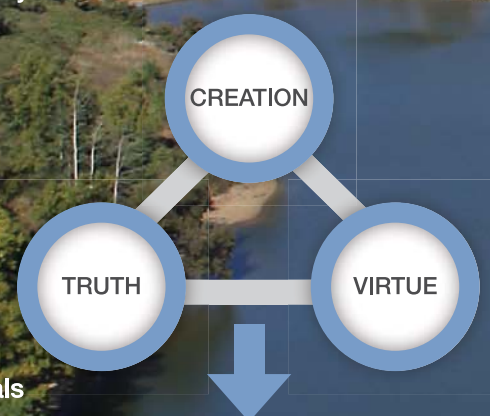
# 道徳精神涵養

## ■ The Founding Spirit: Uplifting Morality

## ■ Mission Statement

We strive to nurture motivated students who can initiate a desirable human culture to lead a new era through the delivery of high-quality educational programs, challenging experiential learning opportunities and realizing our educational philosophy and goals.

## ■ Cycle of University Virtues



## ■ Educational Goals

Fostering Inquiring Minds	Cultivating Creative Professionals	Nurturing Moral Activists
-Nourish creative thinking -Acquire liberal arts knowledge	-Explore practical academia -Develop converging technologies for innovation	-Encourage community service -Enhance morality and cooperative spirit

## ■ Brief History

- 1997 Founding of the university  
Inauguration of Dr. Kim, Hyang-Ja as the first president
- 2002 Selected as the Regional University with Governmental University Aid for 2 years
- 2003 Establishment of the Advanced Mobile Industry Support Center
- 2004 Selected as a Host University for the NURI:New University for Regional Innovation Project
- 2005 Selected as a Host Institution of the RIS:Regional Innovation System Project
- 2006 Awarded the Digital Contents Convergence Professionals Training Project
- 2007 Opening of the Saemaul Academy
- 2008 Awarded University Education Capacity Building Project in the field of Training Promising Human Resources
- 2009 Awarded the Project for Fostering Region-specific Industries for 2 years  
Awarded HUNIC: Hub University for Industrial Collaboration project for 3 years
- 2010 Awarded Admissions Officer System Operation Project  
Selected as a Training Center for Private Security Personnel
- 2011 Selected as the Asia -Pacific Center for Avid Education
- 2012 Awarded University Education Capacity Building Project  
Selected as an Advanced Leader in Industry-University Cooperation by the Ministry of Education (Stage I)  
Opening of the Kyungwoon Byuck Kgang Arts Center
- 2013 Acquired accreditation from the Ministry of Education and the Korean University Accreditation Institute  
Selected as an Organizer of Quality of Working Life Campus for Industry-Academy Convergence
- 2014 Selected as an Advanced Leader in Industry-University Cooperation by the Ministry of Education (Stage II)  
Awarded the CK-1:University for Creative Korea Project-and selected as an Agency for the Project for Strengthening Specialized Regional Universities  
Selected as a Participant of the Leading Local University Consortium  
Undergraduate programs: 6 colleges with 22 departments  
Graduate programs: 3 graduate schools with 19 departments



## Up to the Challenge! The First, Kyungwoon University - Fostering 21<sup>st</sup> Century GLOCAL Leaders

The global society needs leaders and entrepreneurs to shape progress toward innovation, new technologies, and civic and cultural engagement. Our 22 programs in 6 colleges have developed a variety of student enrichment programs in academic and practical fields to instill in their graduates more comprehensive understandings and broader perspectives to contribute to their community, region, country and furthermore the world.





# Global Leaders in Industry and University Cooperation



## Center for Creative Economy Innovation(CCEI)

CCEI offers comprehensive educational and technical resources for the local community along with a plethora of support programs for the local industry. Its primary mission is to facilitate Kyungwoon University's overall mission to ensure a standard of excellence and high quality education to provide a more capable workforce to meet the global needs of the current trends.

## Quality of Working Life (QWL) Campus

The QWL Campus offers access to on-site facilities which ensure the holistic well-being of local employees, providing life-long learning opportunities. More than 200 students in mobile engineering and computer engineering majors spend their higher years for career related on-site education at this state-of-the-art multipurpose facility.







## More Opportunities and Challenges Shaping the Future of the Globe

**IKW Global offers students an individualized international experience as well as a broad-based liberal arts education**

Students spend their semesters and vacations learning at the university's overseas sister institutions in every accessible continent: America (USA & Canada), Europe (UK), Asia (China, Taiwan, Japan, Vietnam and Philippines) and Africa (Ethiopia), providing the opportunity to engage with a variety of cultures and people through coursework, fieldwork, internships, independent study and immersion. Over the course of the program, students build language skills, gain hands-on experience and acquire a cross-cultural education suitable for today's globalized economy.

### ■ Korean Language Academy(KLA)

All KLA teachers are experienced and specially trained to teach Korean to non-native speakers from all over the world. Our attentive staff has consistently worked towards providing an enriched cross-cultural environment with KLA students.

### ■ Sister Universities and Institutions

Shenyang University of Technology (China) Shandong Art & Design University (China) Liaoning Art & Design University (China)  
Century College BUPT (China) Changsha University (China) Dalian University (China) Yanbian Univeristy (China)  
Ministry of Industry and Trade (Vietnam) Nguyen Trai University (Vietnam) Hanoi Industrial University (Vietnam)  
Hochimin Industrial University (Vietnam) Benguet State University (Philippines) University of San Jose-Recoletos (Philippines)  
University of Santo Tomas Language Center (Philippines) Asia-Pacific College in Hawaii (USA)  
University of California, Riverside (USA) Avid Technology (USA) Birmingham City Council Brasshouse (UK)  
Bournville College (UK) Meikai University (Japan) Beppu University (Japan) National Taiwan Sport University (Taiwan)  
Lunghwa University of Science and Technology (Taiwan) Technical & Vocational Training Corporation (Saudi Arabia)



An Initiator of Collaboration with Private, Public, Academic  
and Industrial Sectors

Partnerships with Over 1300 Companies  
Working Together Makes Real Progress

Kyungwoon University has long been the central engine of innovation to local business with over 1200 member companies in partnership. We have created a virtuous cycle of innovation and utilization of new ideas and technologies, offering opportunities for further business development, along with contributing to the ongoing education of the workforce. Moreover, we provide a better quality education for students with more chances to raise entrepreneurial skills and aptitude through active and fluid communication with various industries and fields of practice.





**Awarded 80 Million Dollars of National Grants for Governmental Projects**

Kyungwoon University has been awarded various national fund-endorsed projects for industry-university collaboration and the advancement of university education capabilities which assist in the development of innovative and talented personnel who can contribute not only to local industries but also to national and international economies. IKW offers students a wider stage to move on through our interconnected collaborative systems with more than 1,200 member companies and a more flexible and extended course delivery that meets the global demand for the future careers.





## “More Opportunities Changing Futures”

As the best place with "More Opportunities for Changing Futures," IKW ranks top with the highest post-graduation employment rate among local universities and colleges in southeastern Korea, approved by the Ministry of Education, Science and Technology. Our post-graduate advisor program assists with interactive individual counseling for students to set their long and short-term career goals for in-and outbound employment through the creation of a professional development strategy for life at IKW and beyond.





# Plenty of Scholarship Opportunities

## Quality of Student Life Initiative

Your financial needs can be met with a combination of more than 50 kinds of aid, grants, scholarships, and national work-study employment programs based on both demonstrated need and academic performance. We also run various student life programs to create and support student services, facilities and activities, building student life to a more satisfactory level, thus increasing their engagement across campus.





# Kyungwoon Byuck Kang Arts Center Largest, Latest Local Performing Arts Facility

Kyungwoon Byuck Kang Arts Center, a 1,700-seat, state-of-the-art theater, has rapidly established itself as a highly successful new multi-arts center in southeastern Korea as the ideal place to take time out, unwind and experience the best in visual and performing arts. This cutting-edge artistic venue is committed to providing a wide variety of entertainment and cultural activities for residents helping to fulfill the community's longtime vision for a vibrant region rich in the arts.





## Acting Across the Globe

Our helping hands touch every corner of the world.

Our helping hands touch every corner of the world.  
IKW, in conjunction with the Province of Gyeongsangbuk-do, has participated in global efforts to end poverty with Saemaul Undong (Movement), one of UN's Poverty Eradication Programs. Saemaul Undong is a revolutionary community development program, which transformed Korea, once the neediest of nations after the Korean War, into one of the world's largest economies. This model is now being expanded into almost every corner of the world as the world's regional development model. As part of the efforts to construct a blissful global community for coexistence and prosperity of peoples, IKW has initiated various community leadership programs with the Saemaul Undong focus for both Korean nationals and foreigners from developing countries under provincial grants, as well as dispatching overseas volunteer teams.





## Cradle for IT Professionals College of IT & Energy

Department of **Computer Engineering**

Department of **Mobile Engineering**

School of **Multimedia**

Department of **Architecture**

Department of **Materials and Energy Engineering**





A Network of Opportunities

Department of **Computer Engineering**



The Department of Computer Engineering sustains and strengthens its inspirational career-oriented teaching and research program to provide students a holistic view of the field with well-balanced flexible curriculum and intensive, hands-on coursework, and prepares them for success in a wide range of industries, from software to bioengineering: future-oriented IT convergence technology fields such as mobile, ubiquitous, post-PC, embedded systems, robotics and more.

A Competitive Edge for Technical Knowledge and Creative Expertise

School of **Multimedia**

- Major in Multimedia
- Major in Digital Video



Major in **Multimedia**

IKW's specialized Multimedia program helps one acquire hands-on experience with a cross-platform of a wide variety of skills and knowledge including web design, game design and animation, advertising graphics, text, audio, and video. Upon graduation, one is able to create a wide array of digital media to build a full professional portfolio in the ever changing and diverse fields of advertising, publishing and communications.

Major in **Digital Video**

Digital Video Major is an unparalleled resource of still and moving image contents, underlying the next epoch of photo and video technologies to cope with increasing demand for more segmented and profound special areas. The department has strived to nurture top-notch personnel with hi-tech mindset, sensitivity and creativity who are fully prepared for the future.

Higher, Larger, Safer, Better

Department of **Architecture**



The Department of Architecture mainly provides two options of specialization: architectural engineering and interior architecture to nurture creative architects capable of building novel, eco-friendly living areas in comfort. We provide a comprehensive professional curriculum, covering theoretical and technical courses for students preparing to enter into professional practice with various opportunities to participate in teams for the management of actual on-site projects.

Engineer Your Future  
Program Your Success

Department of **Mobile Engineering**



The Department of Mobile Engineering educates talented students to achieve their full potential to be globally competent mobile professionals through training them for the upmost capability of adaptation for the latest mobile technology breakthroughs. We help students develop various solutions for multimedia mobile environments, and conduct various projects in collaboration with leading industries offering abundant opportunities of firsthand experience.

Nurturing Globally  
Competitive Professionals

Department of **Materials and Energy Engineering**



From high-tech eco-friendly materials and energy plans to the development of appropriate alternatives and energy technologies for developing countries, materials and energy engineers create new materials and improve upon existing materials. Students can select one of their own specializations to fit their career goals from two areas: Material Engineering and Energy Engineering.



# Your Successful Aviation Career at the College of Aviation

We lead the world by advancing aviation education

Department of **Flight Operation**

School of **Airline Tourism**

Department of **Avionic Electronic Engineering**

Department of **Aviation Information & Communications Engineering**





Pursue Your Desire to Fly

Department of **Flight Operation**



Achieve your dreams of becoming a leader in the cockpit and aviation industry. The IKW aviation program provides students with the academic and professional tools required to achieve success in the constantly changing aviation industry, training them to be competent professionals in flight operation and aviation management. Upon completing the well - balanced curriculum of theoretical and practical flight training courses, students will have the opportunity to obtain a private or commercial aircraft pilot license or an instrument flight certificate.

Skies Open for Us

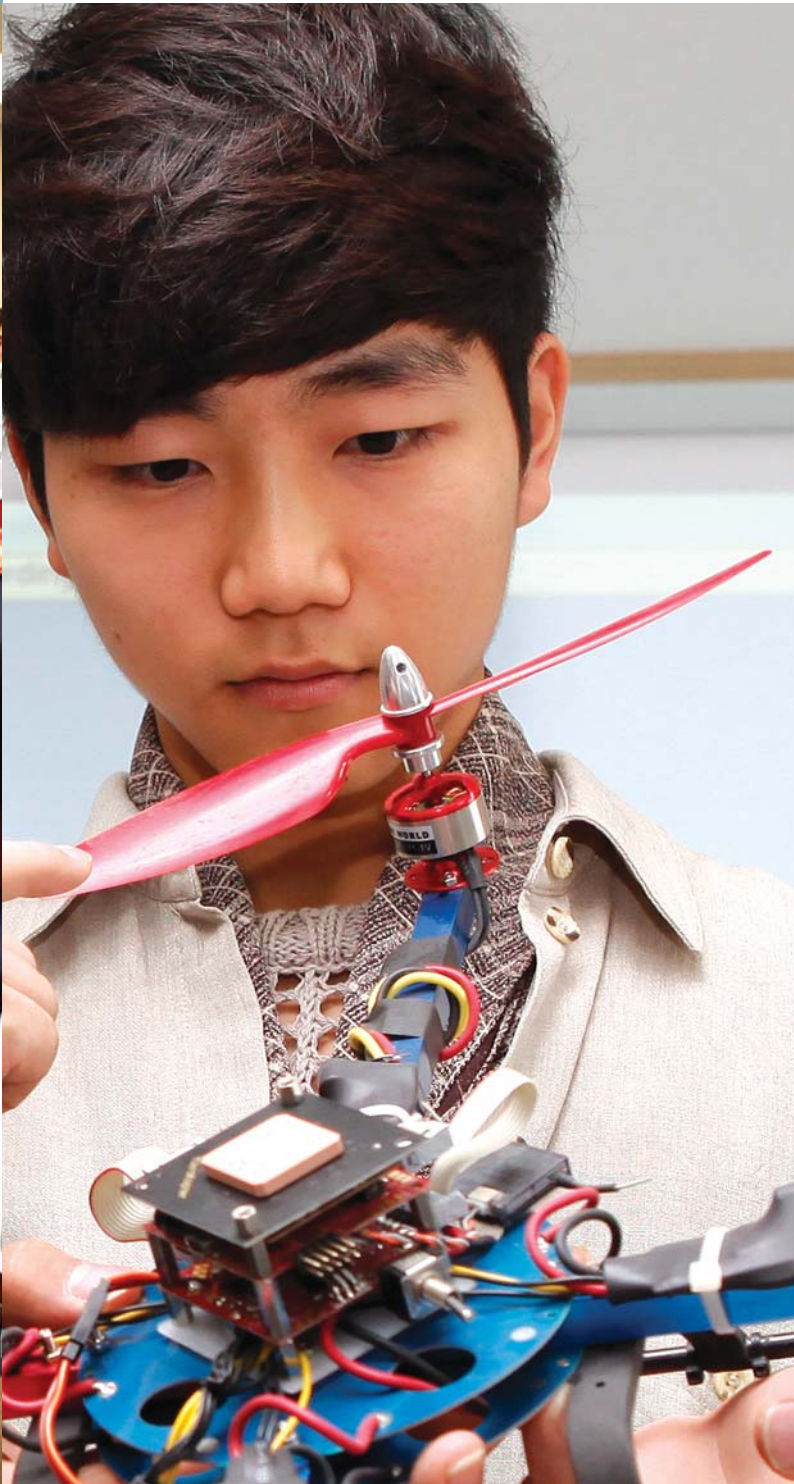
School of **Airline Tourism**  
• Major in Flight Attendant  
• Major in Hospitality & Tourism Management



The School of Airline Tourism provides students with various employment opportunities in large-scale tourism businesses based on rigorous on-the-job flight attendant training. Our program will prepare prospective flight attendants to apply technical knowledge and skills geared to the performance of a variety of personal services conducive to the safety and comfort of airline passengers during flight, including the verification of tickets, explaining the proper use of safety equipment, providing passenger services, and responding to in-flight emergency situations.

Realizing Technological Benefits to Society

Department of **Avionic Electronic Engineering**



The Department of Avionic Electronic Engineering specializes in the field of avionics through combining a solid footing in electronic and computer systems for a wide range of aerospace applications. Our competitive program is designed to enable students to develop their depth of knowledge and skills in various aspects of avionic systems through a range of specialist modules and in-depth project work.

Leading a New Epoch of IT Industry

Department of **Aviation Information & Communications Engineering**



The Department of Aviation Information and Communications Engineering not only functions as a hub for the convergence of information and communication technology and aviation but also as the center of globally competitive field-based research with hands-on training, offering a cutting-edge curriculum to educate promising high-tech professionals in aviation-related IT, computer and mobile communications.



**We serve a healthier and happier community for  
a better quality of life**

Department of **Physical Therapy**

Department of **Occupational Therapy**

Department of **Dental Hygiene**

Department of **Biomedical Laboratory Science**

Department of **Optometry & Vision Science**

Department of **Health Care & Biotechnology**

Department of **Health Service Management**





Providing Seamless Patient Care

Department of **Physical Therapy**



As one of the most competitive programs in Korea, Department of Physical Therapy has prepared quality physical therapists who are committed to clinical excellence, professional distinction, and pursuit of scholarly activities in a cooperative learning environment with the faculty who are not only excellent teachers, but also outstanding clinicians, researchers and leaders in the profession.

Helping Hands for Occupational Therapy

Department of **Occupational Therapy**



Occupational therapy is a part of health medicine that cures and educates adults and children with physical disorders, cognitive damage, and mental challenges through meaningful occupational therapy in order to help them to improve their functions and to actively participate in social activities. We prepare our graduates to be competent occupational therapists and rehabilitation professionals, capable of providing excellent clinical services in any practice setting.

Working Together to Promote Oral Health

Department of **Dental Hygiene**



We prepare students for challenging careers in dental hygiene. The mission of our Dental Hygiene Program is to partner with students to achieve academic excellence; to promote scholarly activity, health promotion, disease prevention and research; to participate in community service; and to offer comprehensive client care, utilizing critical thinking and evidence-based decision making. Dental hygiene students are educated for a challenging career in a growth profession dedicated to the prevention and detection of most oral problems.

Nurturing Creative, Virtuous Medical Leaders

Department of **Biomedical Laboratory Science**



As an interdisciplinary science of medicine and life medicine, Biomedical Laboratory Science deals with theory and practice of the latest medical technologies which provide important medical research information and development on diagnosis and treatment of human diseases. We strive to enhance students' clinical capability by strengthening laboratory practice and enabling them to acquire up-to-date clinical knowledge and know-how.



Enhancing Your Vision

Department of **Optometry & Vision Science**



The Optometry & Vision Science Program is committed to training highly qualified future optometrists and visual science researchers, as well as for enhancing quality of life at home and abroad by improving and preserving vision through world-class patient-centered care, research, and education.

The Right Start for the Healthcare Profession

Department of **Health Care & Biotechnology**



The department of Health Care & Biotechnology is designed to educate students to assume and continue professional leadership roles in communities; to advance knowledge and understanding of the biological, social, behavioral, environmental, and economic factors affecting the health status of the population in general, and to provide broad-based technical assistance for the public health arena at local, state, regional, national and international levels. Students in the biotechnology major can develop practical skills for agricultural, food and beverage industries; health care; chemical, pharmaceutical and biochemical industries and environmental analysis.

Discovery, Respect  
and Service for the Community

Department of **Health Service Management**



Healthcare administrators work in a wide variety of medical office settings and coordinate and supervise many aspects of health care delivery. The Department of Health Service Management is designed for students with career interest in public health, health services administration or policy work. Students are exposed to a wealth of knowledge and skills, vital in a variety of organizational settings, as well as health-based interdisciplinary studies with a combination of management, business and health care skills in order to assist medical professionals.



We serve our community for  
a better quality of life

School of **Police Administration**

School of **Social Welfare**

Department of **Military Science**





For the Realization of a Just Society!

School of **Police Administration**  
• Major in Police Science  
• Major in Law Enforcement & Public Administration



As the foremost police academy in the community, we foster competent security professionals through an intensive training-based systemic curriculum for both theoretical and hands-on studies. We prepare students for administrative positions within law enforcement and private security organizations by helping them thoroughly understand the key concepts for the fields of criminal justice and law enforcement administration.

Togetherness for a Happier Society

School of **Social Welfare**  
• Major in Social Welfare  
• Major in Child Welfare



The School of Social Welfare offers two options of specialization: child welfare and social welfare. Our field-based child welfare program offers a thorough grasp of an integrated curriculum grounded for a deep understanding of child growth and development. The social welfare program trains students to become competent social workers to contribute to the social welfare systems, based on in-depth theoretical background and practical skills.

A Golden Ticket to Military or Civilian Career

Department of **Military Science**



The Department of Military Science has a main focus to produce professional military officers equipped with both academic aptitude and physical fitness. Our military science program offers theory-based hands-on training with an emphasis on individual participation, leadership development and the capability to function effectively in positions requiring significant responsibility for military or civilian careers.



## Forging innovative ways of serving the community

School of **Protection Science**

Department of **Sports for All**





Taught by Professionals in  
the Professional Venue

- School of **Protection Science**
- Major in Protection & Security
  - Major in Martial Arts
  - Major in Taekwondo



The School of Protection Science is a cradle of security specialists. As the center of producing confident and well trained security personnel, the school operates an exceptional training venue that meets the required international standards for protection operatives. You can kick off your security career with experienced faculty and state-of-the-art facilities.

Healthful Benefits for the Quality of Life

Department of **Sports for All**



The Department of Sport for All was established to develop students' leisure management and sport science skills. The school aims at fostering leaders to fulfill the pursuits of higher quality of living and more athletic activities of a new epoch. Students will acquire academic and practical knowledge and skills needed for the leadership in operating sports-related organizations in coordination with diverse sporting programs. Systematic studies in this program should enable students to understand advanced and up-to-date sports science, making them leaders in the sports field.



# Care to Change the World

## College of Nursing

### Department of Nursing

The Department of Nursing is dedicated to changing the world through the science of nursing. We are committed to excellence in nursing education, preparing healthcare professionals to provide high quality, safe care for the community. Our nursing program further encompasses health promotion of families, individuals, and communities in a variety of settings with experienced faculty, real-world practice and clinical experiences.





# Unlimited Possibilities for Higher Education

Making a positive change in your organization, community, and in the lives of others.

Find your intellectual home at Kyungwoon University, where dedicated faculty in the graduate programs of different fields will lay the groundwork for a lifetime of learning and curiosity. IKW's advanced degrees promise a rich experience for passionate individuals, drawing highly qualified students to 16 Master's programs, 2 Doctoral programs and various graduate certificate programs.



**Graduate School**

**Doctoral Program**

- Police Administration
- Protection Science

**Master's Program**

- IT and Energy
- Optometry & Vision Science
- Physical Therapy
- Dental Hygiene
- Biomedical Laboratory Science
- Police Administration
- Protection Science
- Sport for All

**Professional Graduate School**

- Architecture and Environment
- Business Administration
- Hospitality Management
- Multimedia
- Digital Video
- Optometry & Vision Science
- Occupational Therapy

**Graduate School of Social Welfare**

- Social Welfare
- Senior Welfare

**CEO Course**





# University-Industry Collaboration Foundation



## ■ Leaders in Industry-University Cooperation (LINC)

The Leaders in Industry-University Cooperation (LINC) program, funded by national grants, is designed to narrow the gap between university education and the realities of the industrial field, as well as to lead mutual development of academia and local industry by improving the college education system through more intense industry-university collaboration. We have strived to enhance the competitiveness of local economy by educating potential professionals, pursuing aggressive research & development activities and equipping with state-of-the-art facilities through joint projects with 1200 member companies.



## ■ Regional Innovation System (RIS)

The Regional Innovation System (RIS) team aims to enrich the capability of higher value-added business of regional principal products and developing staple brands. For further fruitful effects, the RIS team is interconnected with IT & Multimedia (Design) Center, Ubiquitous-Food Supporting Center and Food Research Institute financially supported by IKW's University-Industry Collaboration Foundation.



## ■ SME University-Industry Collaboration Center

The SME University-Industry Collaboration Center pursues enhanced competence and prosperity of the local economy in cooperation with small and medium sized businesses of the region. Main tasks of the center are focused on providing necessary technologies, resolving technological hindrance, and training potential and in-service workforce.

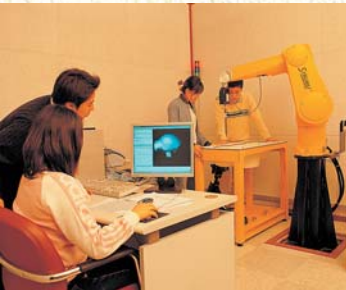
## ■ Business Incubation Center

The Business Incubation Center aims to support newly starting promising venture businesses with systematic and timely provision of information and training. It also promotes joint research activities in collaboration with local industries, resulting in more job opportunities and strengthened national and local technological competitiveness.



## ■ Advanced Mobile Industry Support Center

The Advanced Mobile Industry Support Center was established under the financial and administrative support of the Ministry of Public Administration and Security, Gyeongsangbuk-do Provincial Government and Gumi City to accomplish technological innovation and globalization of local small and medium sized industries. Now, this state-of-the-art testbed environment is the only comprehensive mobile industry support center in the nation, endorsed by the Ministry of Education, Science and Technology, Ministry of Knowledge Economy, and Ministry of Information and Communication under the tight university-industry-government collaboration. The cooperation between the center and mobile industry is creating synergy-effects for both university and local economy, making the industry more competent and providing the students with rich opportunities to learn practical skills using advanced facilities.



## ■ Career Services Center

Our post-graduate advising program assists interactive individual counseling for students to set their long and short-term career goals by creating a professional development strategy for their life at IKW and beyond. They can explore more about their personality, values as well as aptitude best fit for the industries or fields they are interested in.





# With new academic and career programs, renovated facilities, and updated educational institutes

IKW has created a pleasant educational environment, significantly improved technology, and a brilliant faculty and research staff with the highest degrees in their fields.

## ■ Saemaul Research Institute

The Saemaul Research Institute was established in 1999 in order to inherit the principles of Saemaul Undong, the successful regional development model initiated by the late President Park Chung Hee. This institute researches and develops the Saemaul Undong Theory and Practice and its applications to developing countries as the best model to eliminate poverty around the world, publishes scientific journals and hosts various academic conferences and leadership training sessions.

## ■ Saemaul Academy

By establishing Saemaul Academy on July 24, 2007 in partnership with Gyeongsangbuk-do province, IKW has taken the lead in activating Saemaul Undong as part of international development and cooperation efforts to eradicate poverty around the globe. As the only research institution specializing in Saemaul Undong in the country, the Academy has conducted academic research, developed policy tasks, and identified practical tasks which can be contributed to shared prosperity and development around the world.

## ■ Life-long Learning Center

The courses at our Life-long Learning Center are designed to be taken for personal interest and to realize the joy of learning for adult learners, community groups, staff and students at IKW, and local, regional and global businesses. We believe that education provides opportunities for all and that learning should be a creative, intellectual and physical lifelong activity.







## ■ Kyungwoon Byuck Kang Art Center

The Byuck Kang Art Center is a 1,700-seat, state-of-the-art theater and has rapidly established itself as a highly successful new multi-arts center in southeastern Korea as the ideal place to take time out, unwind and experience the best in visual and performing arts.



## ■ Byuck Kang Central Library

The Byuck Kang Central Library provides information literacy tools that promote the pursuit of knowledge by teaching our university community to retrieve, critically evaluate and synthesize information for academic, professional and personal pursuits in a wide variety of research and community resources for information.



## ■ Computer Information Center

The Computer Information Center, established in 1997, makes great effort in excellence in electronic information networks for academic research and online education to maximize multimedia education effects with ultra-high speed, large-capacity multimedia service to realize a virtual university beyond space and time, online education via computer communication, teaching from home, and further remote lectures.



## ■ Kyungwoon University Simulation Training (KUST) Center

The KUST Center was created to build healthier lives, free of cardiovascular diseases and stroke in the community as well as to provide public health education in a variety of ways. It provides science-based treatment guidelines to healthcare professionals to help ensure the best treatment for every patient, every time. The center is equipped with four updated simulation rooms with equipment including 3G SimMan, ALS and Simpad, BLS, ACLS, KALS provider courses as well as general CPR courses for the public are also available.



## ■ Flight Simulation Center

Our Flight Simulation Center, equipped with the Cessna C172S NAV III introduced from Frasca International (USA) helps the aviation students experience the best training experience with the advantage of the latest technology, being utilized in modern aircraft. The cockpit environment closely resembles that of an actual aircraft, so student pilots can enhance their flight skills regardless of the weather or time.







## International Affairs Center

The International Affairs Center aims to strengthen our students' global capacity through support drawing from a variety of in-house global programs and international activities. It also provides much information regarding global employment and internship programs by expanding practical exchanges with global institutes and enterprises.



## Student Life Counseling Center

The Student Life Counseling Center is the university's primary facility for personal counseling, psycho-therapy, and psychological outreach and consultation services. Our mission is to promote the psychological, educational, and social well-being of the IKW students and to help prepare them to be productive members of society.



## Kyungwoon Educational Broadcasting Station (KWBS)

The KWBS is an on-campus broadcasting station that focuses on the campus and surrounding community, delivering the latest campus news as well as meeting our students' cultural interests. The station airs broadcasts every morning and evening and presents listening pleasure with special concerts.



## Center for Teaching and Learning (CTL)

The CTL engages and supports the Kyungwoon community to bring research-based practical learning and teaching principles into shared understanding, both inside and outside the classroom with on and offline blended learning.

## Center for Students with Disabilities (CSD)

The CSD is a personal care assistance program specifically structured to help physically-challenged students achieve their dream of a college education. It assists physically-challenged students with the activities of daily living so that they can live on campus independently while working toward their academic goals.



## Volunteer Center

The Volunteer Center assists members of the Kyungwoon community in finding meaningful volunteer experiences and provides opportunities to reflect on these experiences, thereby deepening students' education and making a significant contribution of service to the local community, region, country and the world.



## Design Center

The IKW Design Center, a rising design and research-based institution, envisions advancing creative development in the community through education, research and designing solutions that enhance the physical environment. It is an outreach center of the IKW Department of Multimedia, consistently developing a repertoire of new design methodologies that are applicable to community development.



## Research Institute of Industrial Technology

The Research Institute of Industrial Technology was established at the same time as the University's foundation, and it creates opportunities where a community of faculty, scholars, researchers and entrepreneurs in the region can meet in conversation and scholarly reflection in order to further creative and ambitious projects. The institute publishes a scientific journal on industrial technology research and ensures the progress of the local technological advancements through joint research conducted as part of University-Industry collaboration.



## Research Institute of Social Sciences

The Research Institute of Social Sciences is designed to study various social phenomena through the collecting and analyzing data at home and abroad on social sciences, and to actively participate in and contribute to balanced academic development. Further, the institute aims to seek more effective ways for contributing to regional policy dimensions by presenting optimum policy alternatives to overall areas in the field of social sciences.





# The central hub of student life

## Places of convenience, recreation and leadership

### Student Administration Services supporting the administrative needs of students

Student Administration Services manages students-priority systems to meet our student administrative needs throughout their campus life cycle. Our One Stop Service Station functions as a quick but comprehensive administrative window for every need in student life - from issuing of various certificates to applying for a temporary leave and returning to school, and other academic affairs.

### Student Activity

IKW is proud to offer a variety of academic, social, cultural, and recreational opportunities to enhance campus life experience. We encourage our students to become involved in student life by simply attending a variety of campus programs or assuming a leadership position in a club or with the Student Council, home to a variety of student-oriented and -operated organizations. Take full advantage of your student life, helping with events on campus and serving the community.

### Student Clubs and Organizations

All IKW students can join or lead any of the clubs and organizations, catering to students with interests ranging from academic gathering to community service, enjoying their educational and social opportunities. Please check out the list of clubs and organizations that you would like to join at the Student Center.

### Health Service Center

The IKW Health Service Center provides primary health care services to students, staff and faculty members, focusing on health promotion, prevention of illness, referrals for needed services and health education.





## ■ Kyungwoon Nightingale House

This multipurpose residence is a high - tech learning and residential facility for the students of the College of Nursing and Health Sciences providing an invaluable complement to their preparation before they provide direct patient care, research activity, and clinical practice to the community.

## ■ Cafe Dallmayr

Nestled on the serene hillside, this alfresco cafe has everything you need all in one place. With burgers, sandwiches, rice dishes, coolers stocked with grab-and-go meals and espresso drinks, it also offers plenty of variety for indoor recreational activities.

## ■ Cafe Grazie

Cafe Grazie, IKW's most popular gathering place for students, faculty, and staff to eat, study, or socialize with friends. It offers a big menu for bustling frequenters to grab a meal and various flavors of coffee.

## ■ Fitness Center

IKW's state-of-the-art wellness, athletic and recreational centers at each major building feature the excellent combination of facilities, programs and trainers for campus and community participants.

## ■ Dormitory

The IKW students in residence can fully enjoy the amenities and conveniences for their study, recreation, relaxation and leadership activities at our community-based campus housing and state-of-the-art wellness facilities. Multiple opportunities for cultural arts and sports events are another pleasure for the students in pursuit of academic and career challenges.

## ■ Donghae Training Center

Donghae Training Center, constructed by the donation of Dr. Park Jung-Kwang, the Chair of the Board of Trustees of Kyungwoon University, is a resort-type comprehensive leisure and educational facility to be used for extracurricular activities of the faculty, students, administration, staff, and community residents on the east coast. As a superior educational & recreational venue, this center is an integral part of wellness, relaxation and retraining of the university community.

## ■ Jeju Training Center

Jeju Training Center is a resort-type recreational facility, creating a relaxing haven where residents can feel great joy and inspiration within a nurturing environment. It integrates residential, leisure, and educational functions to be used for extracurricular activities of the faculty, students, administration, staff, and community residents of Jeju Island.



## ■ Banking Services

Daegu Bank, one of the locale's representative financial institutions as well as IKW's main banking partner, provides the faculty, staff, and students with various services on hand with a branch office on the 1st floor of the Central Library Building and ATM booth at the Student Center.



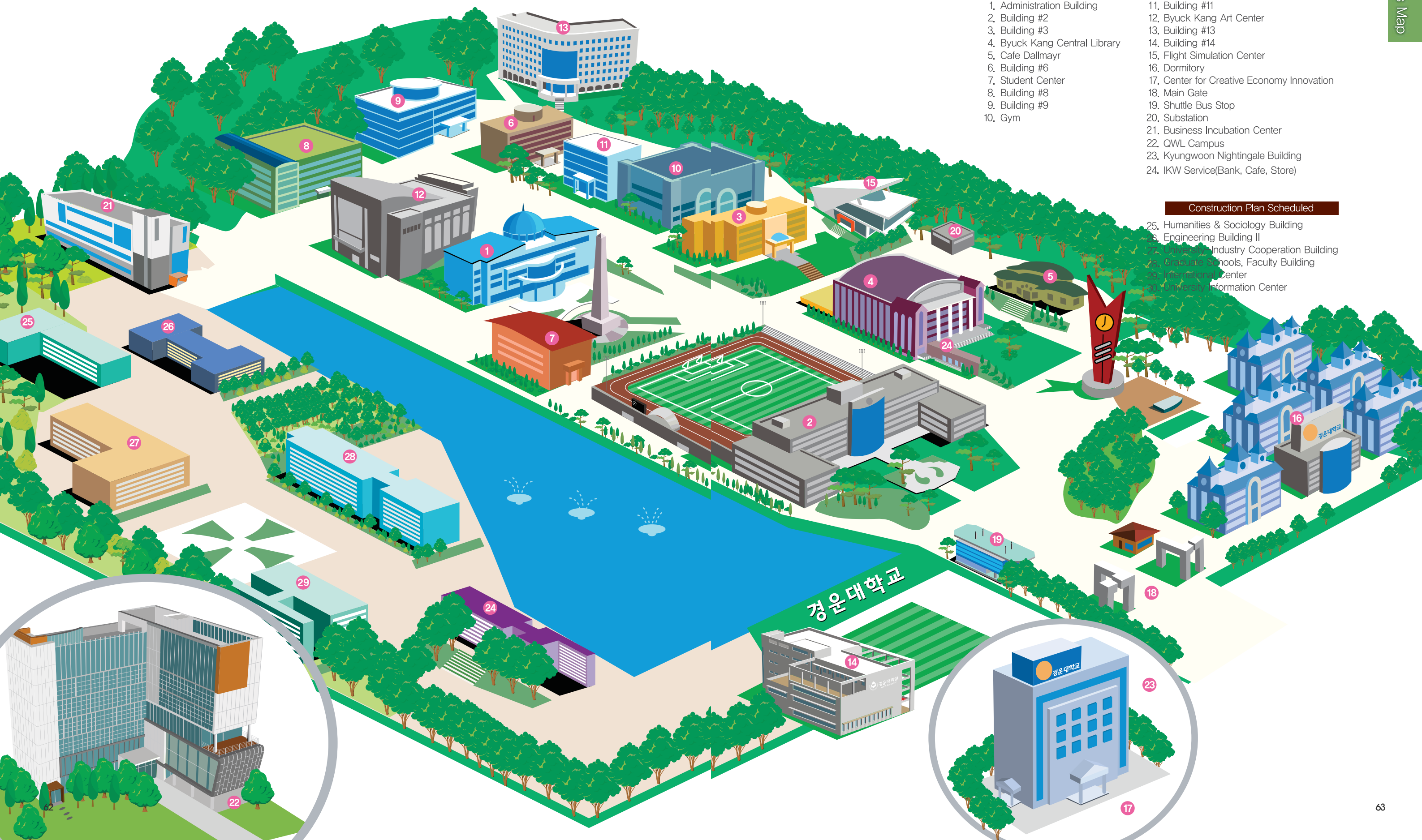
## ■ Shuttle Bus Stop

The IKW Shuttle is a free transportation service for students, staff, and faculty from the main campus to Daegu Education Center and downtown Gumi and Daegu. No farecards, tickets, or special cards to ride the shuttle - simply board the bus to visit a friend, get to an internship, or explore the finest local hotspots.





Meet the students, get to know  
the faculty, explore the campus, and discover life at IKW



- |                               |  |
|-------------------------------|--|
| 1. Administration Building    | 11. Building #11                           |
| 2. Building #2                | 12. Byuck Kang Art Center                  |
| 3. Building #3                | 13. Building #13                           |
| 4. Byuck Kang Central Library | 14. Building #14                           |
| 5. Cafe Dallmayr              | 15. Flight Simulation Center               |
| 6. Building #6                | 16. Dormitory                              |
| 7. Student Center             | 17. Center for Creative Economy Innovation |
| 8. Building #8                | 18. Main Gate                              |
| 9. Building #9                | 19. Shuttle Bus Stop                       |
| 10. Gym                       | 20. Substation                             |
|                               | 21. Business Incubation Center             |
|                               | 22. QWL Campus                             |
|                               | 23. Kyungwon Nightingale Building          |
|                               | 24. IKW Service(Bank, Cafe, Store)         |

Construction Plan Scheduled

- |  |
|--|
| 25. Humanities & Sociology Building          |
| 26. Engineering Building II                  |
| 27. University Industry Cooperation Building |
| 28. Graduate Schools, Faculty Building       |
| 29. International Center                     |
| 30. University Information Center            |

경운대학교

경운대학교





- 730, Gangdong-ro, Sandong-myeon, Gumi-si, Gyeongsangbuk-do, 730-739, Korea
  - IKW CCEI : 180, Chilgokjungang-daero, Buk-gu, Daegu, 702-260, Korea
- QWL Campus : 350-27, Gumi-daero, Gumi-si, Gyeongsangbuk-do, 730-916, Korea
  - Tel, 82 54 479 1201~3, Tel, 82 53 310 7200~2 ■ FAX, 82 54 479 1209